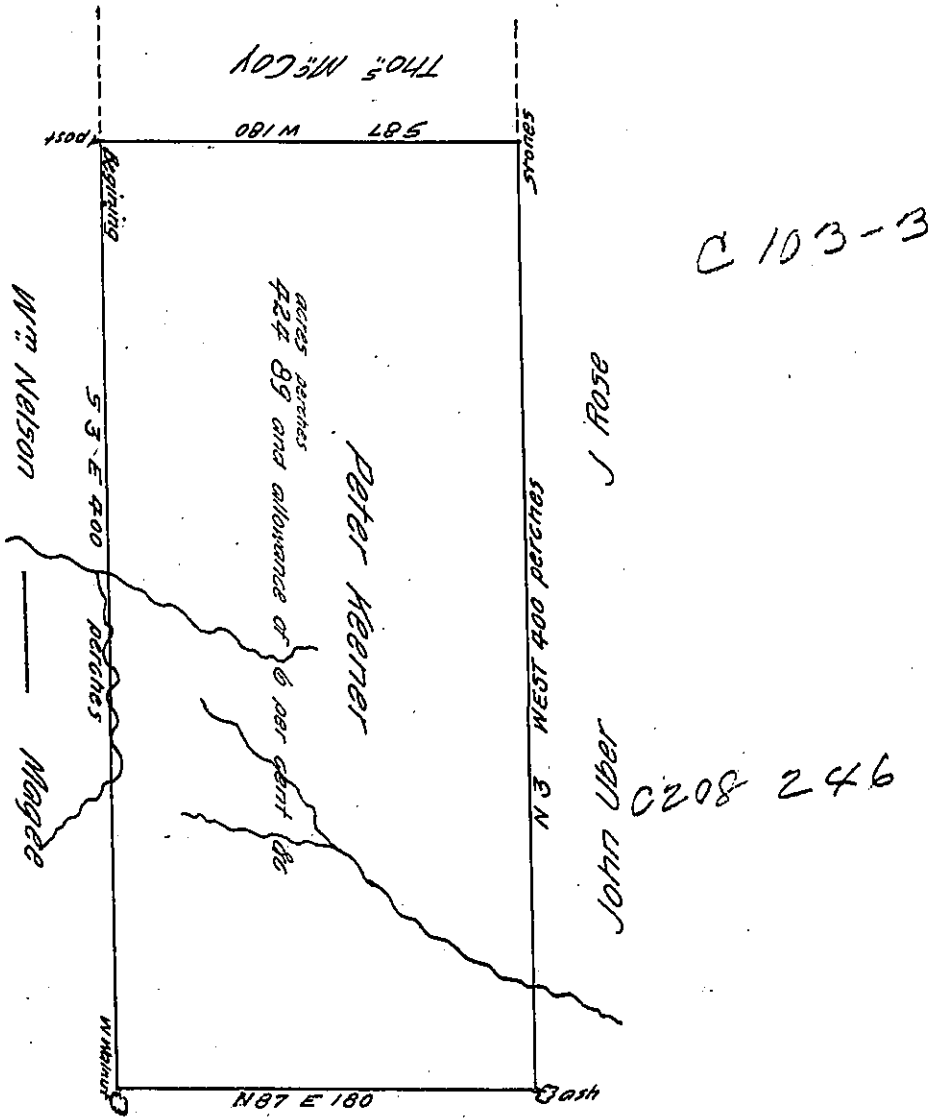


C149-97



George Rodgers
C-38-261 ?

The above is a draft of a tract of land containing four hundred and twenty four acres and eighty nine perches and allowance of six per cent for roads & situate in Springfield Township Mercer County adjoining lands of Geo Rogers on the south John Uber & J. Rose on the east Tho^s McCoy on the north and W^m Nelson & - Magee on the west surveyed the 13th of June A.D. 1823 upon a warrant granted to Peter Keener upon his settlement and improvement bearing date the 3^d day of April A.D. 1822.

To Samuel Cochran Esq.
Surveyor General

A. Brown D.S.
Mercer County

IN TESTIMONY that the above is a copy of the original remaining on file in the Department of Internal Affairs of Pennsylvania, made conformably to an Act of Assembly approved the 16th day of February, 1833, I have hereunto set my Hand and caused the Seal of said Department to be affixed at Harrisburg, this twelfth day of July 1905

Loac R Brown
Secretary of Internal Affairs.